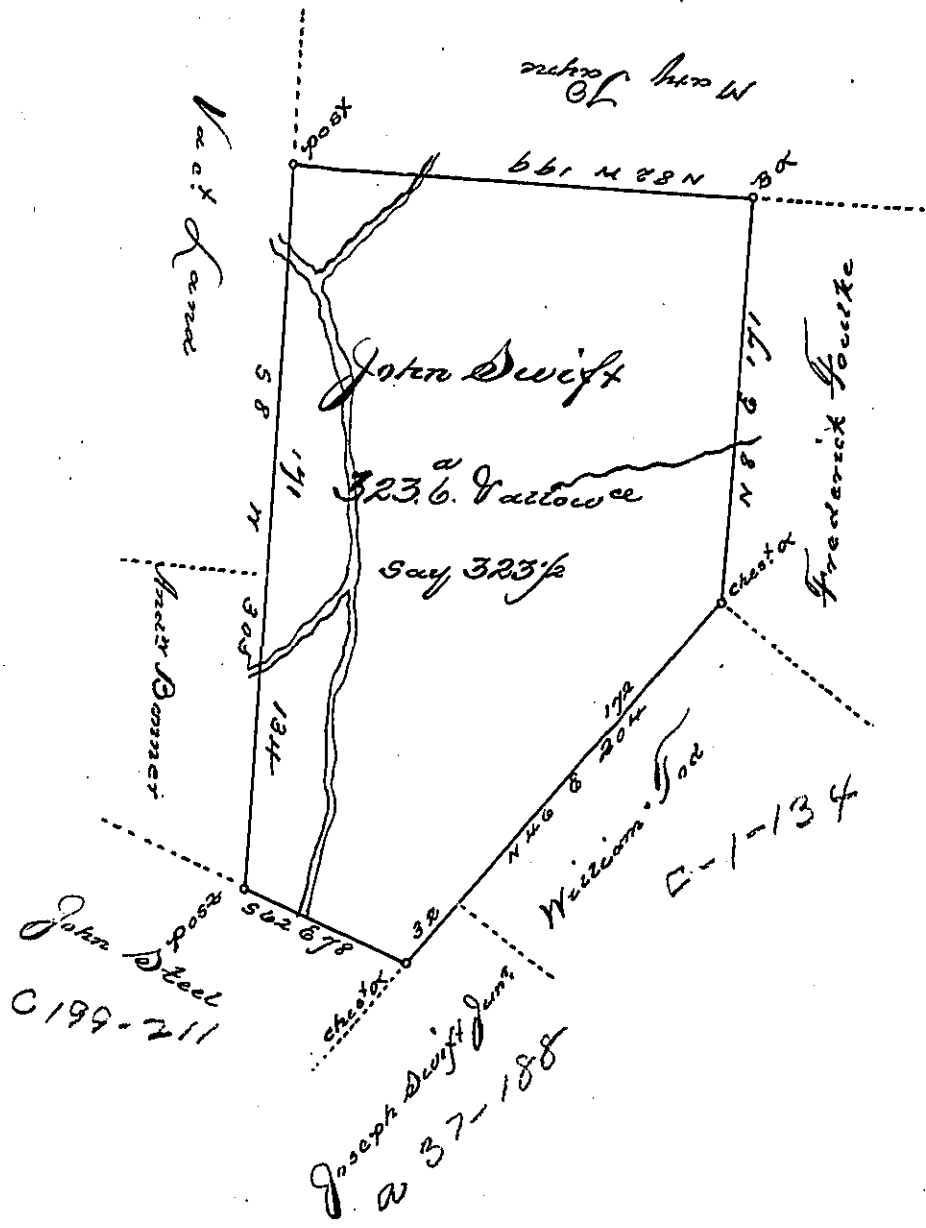


C 157-216

C 12157

B-262



Survey'd to John Swift on the 3<sup>d</sup> Day of Decr. 1774. The above  
 Described Tract of Three hundred twenty three acres & one half of an acre  
 & the usual allowance of six 1/2 C<sup>t</sup> Situate adjoining Land granted to  
 Mary Payne in Westmoreland County. By Warrant of the 18<sup>th</sup> Day of  
 October 1773.

P. Joshua Eldes A.S.

To John Lukens Esqr  
 Sherrif

IN TESTIMONY that the above is a copy of the original remaining on file in  
 the Department of Internal Affairs of Pennsylvania, made  
 conformably to an Act of Assembly approved the 16<sup>th</sup> day of  
 February, 1833, I have hereunto set my Hand and caused  
 the Seal of said Department to be affixed at Harrisburg,  
 this third day of May, 1898

*James W. Latta*  
 Secretary of Internal Affairs.